

>

Mathematics in STEM – transition issues

UCAS – Admissions reform and STEM

24 May 2012



Mary Curnock Cook
Chief Executive

UCAS

> Admissions Process Review

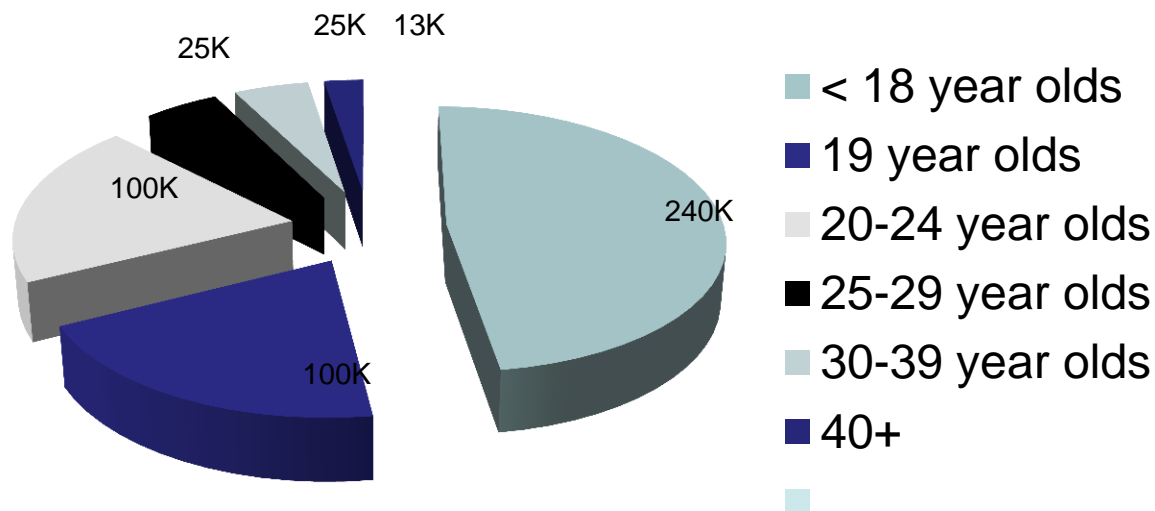


- PQA not going ahead
 - *Felt too much like ‘one big clearing’*
 - *Concerns about WP*
 - *Concerns about IAG*
 - *Difficulties with academic and exam timetables across four countries of UK*
- Progress on
 - Sorting out clearing
 - *Late application window offers choice for applicants*
 - Improvements to process help applicants and HEIs, and drive efficiency

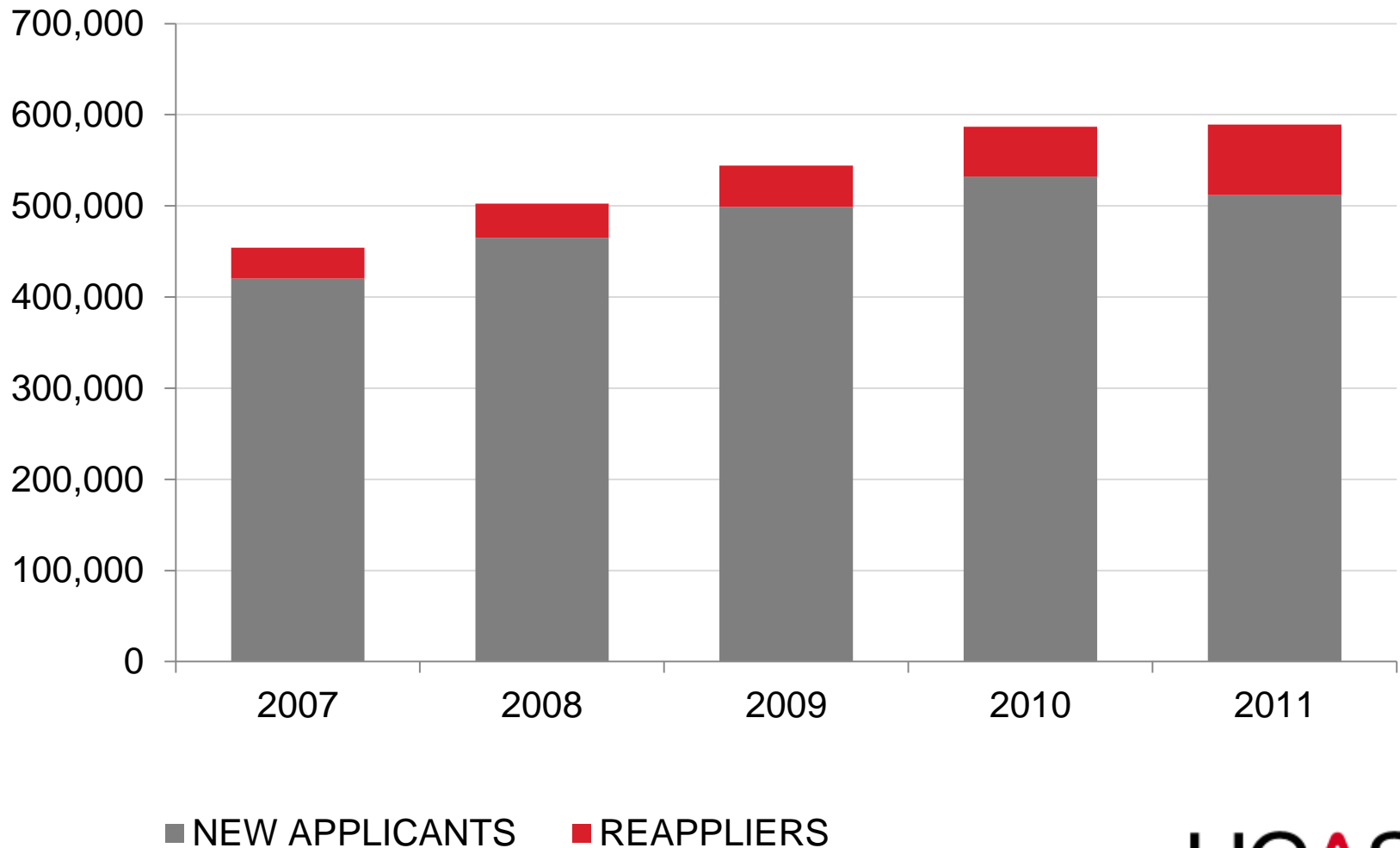
> Post results applications

- c. 50,000 through clearing
 - Latent demand could be more like 100,000
- c. 70,000 re-appliers
- AAB+ policy
- c.100,000 19 year olds
- c.100,000 20-24 year olds

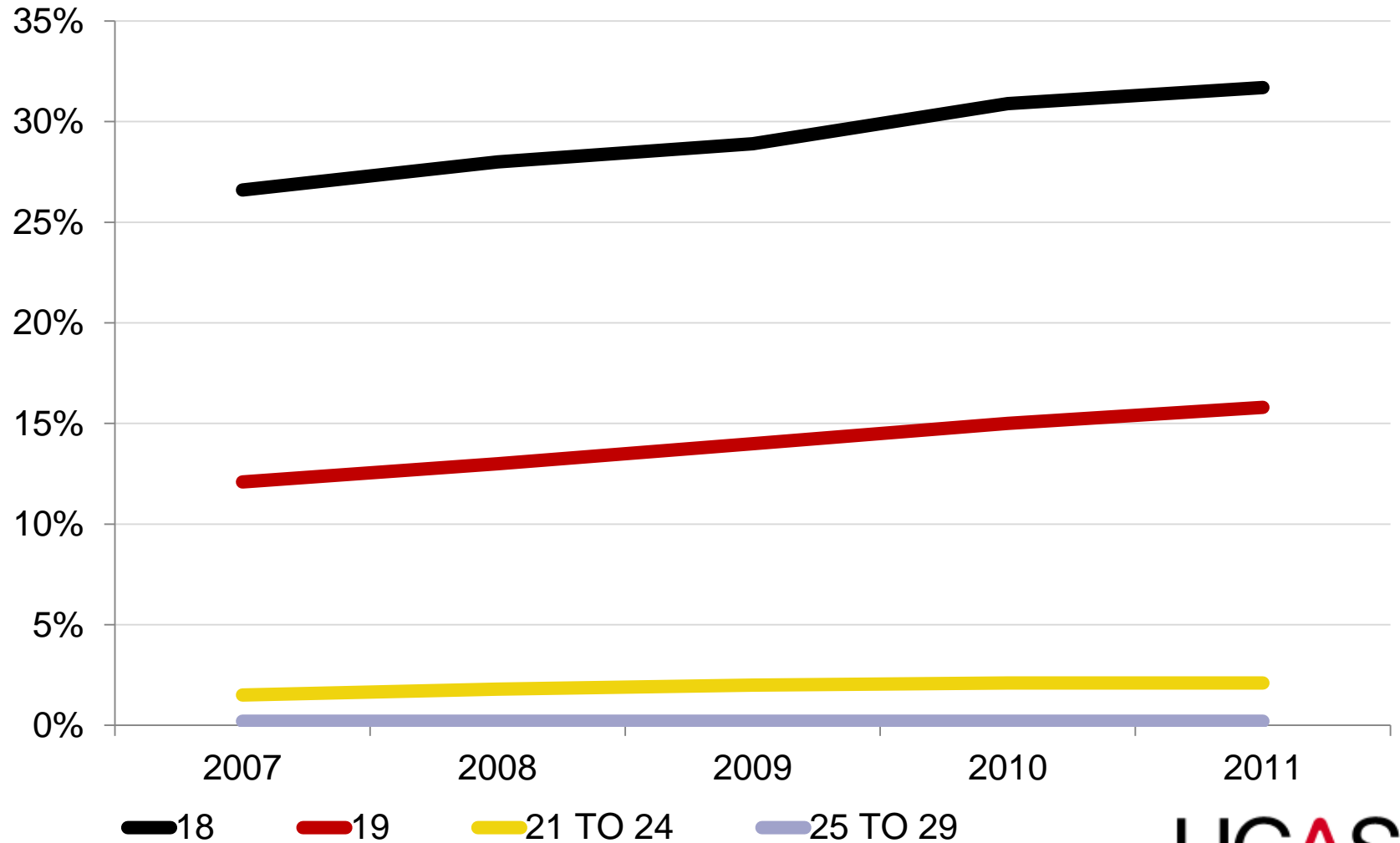
UK domiciled Applicants



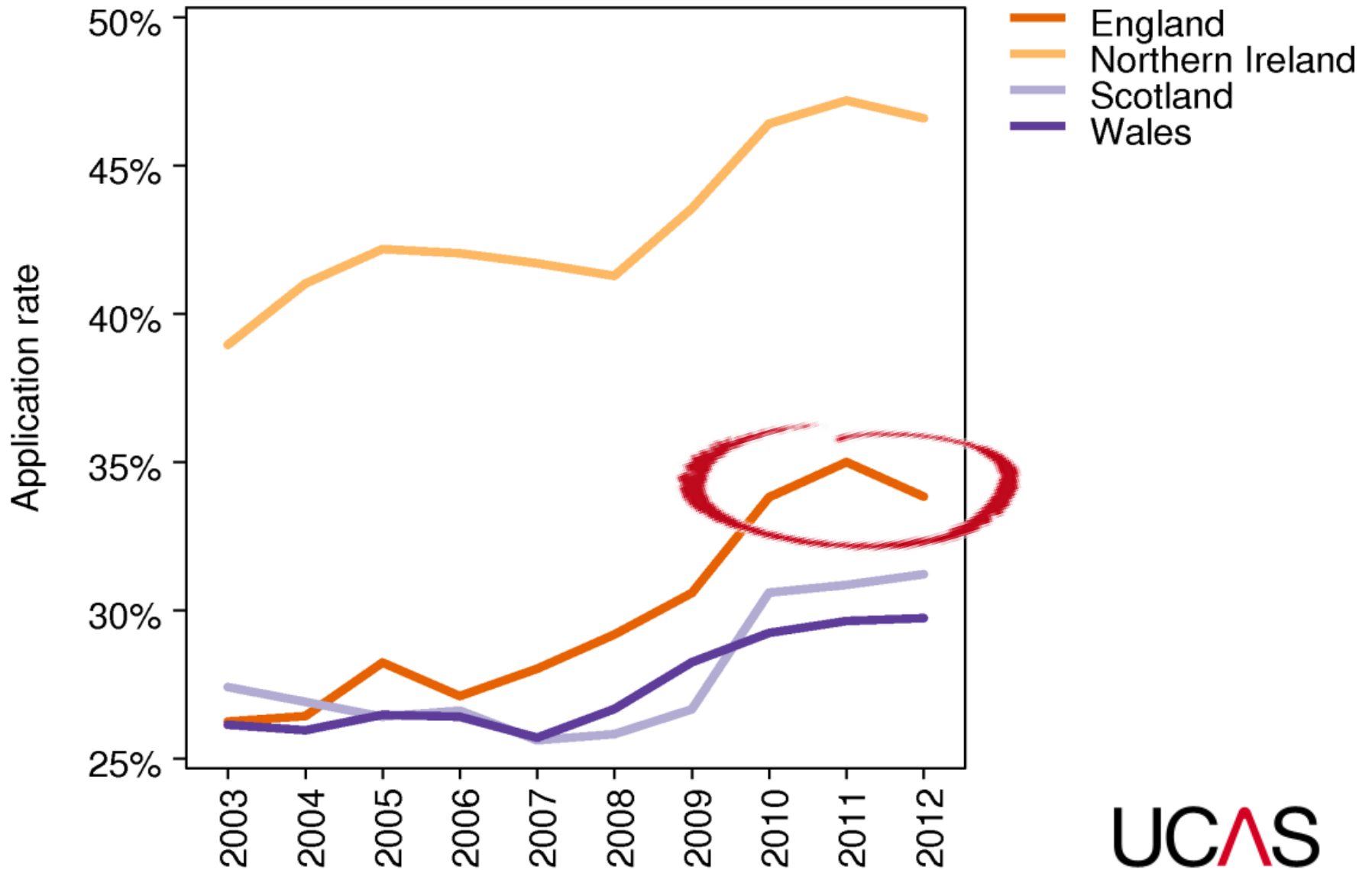
UK applicants split by whether they are 'first time' or have made a previous application.



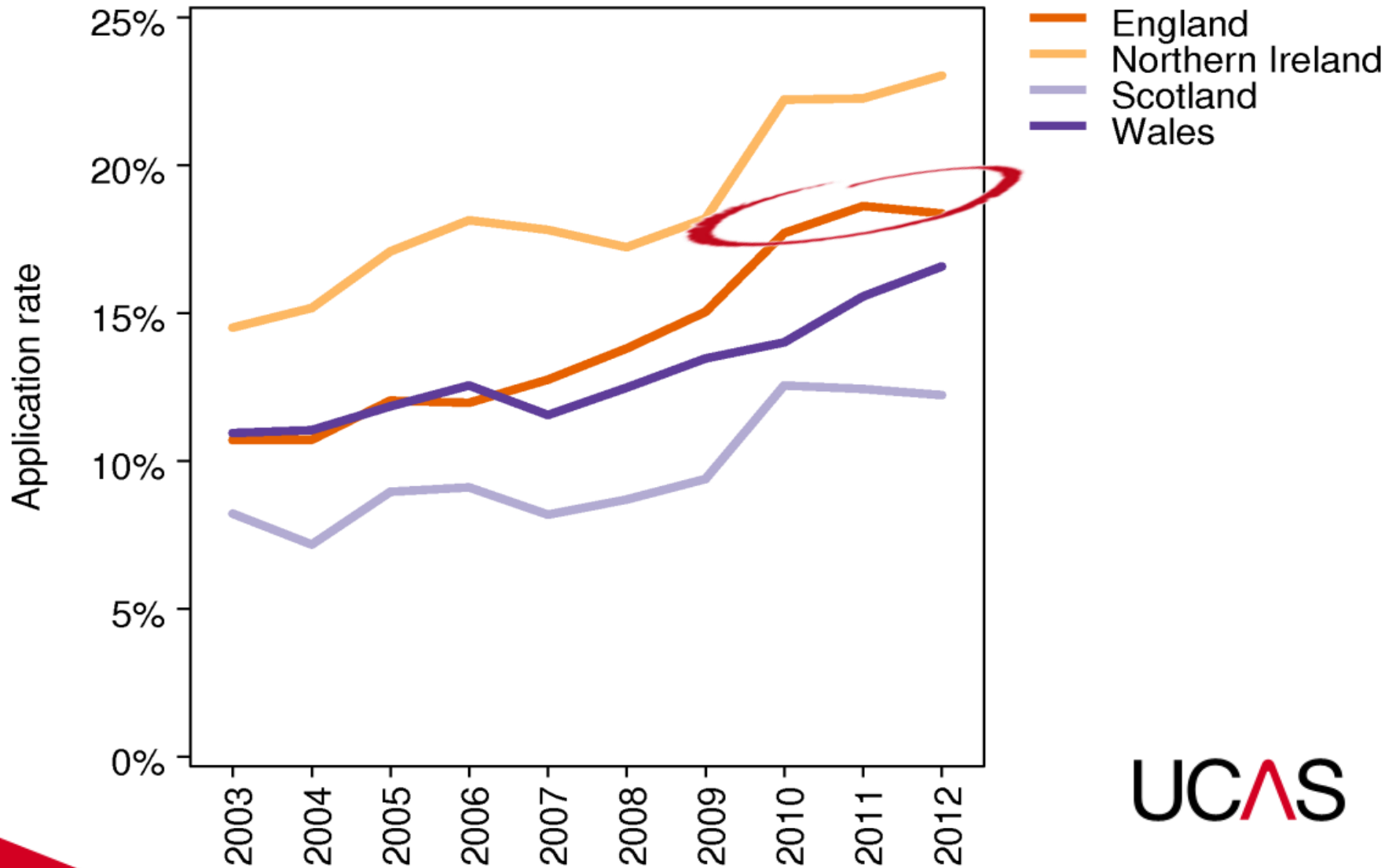
> UK application rates by selected age group



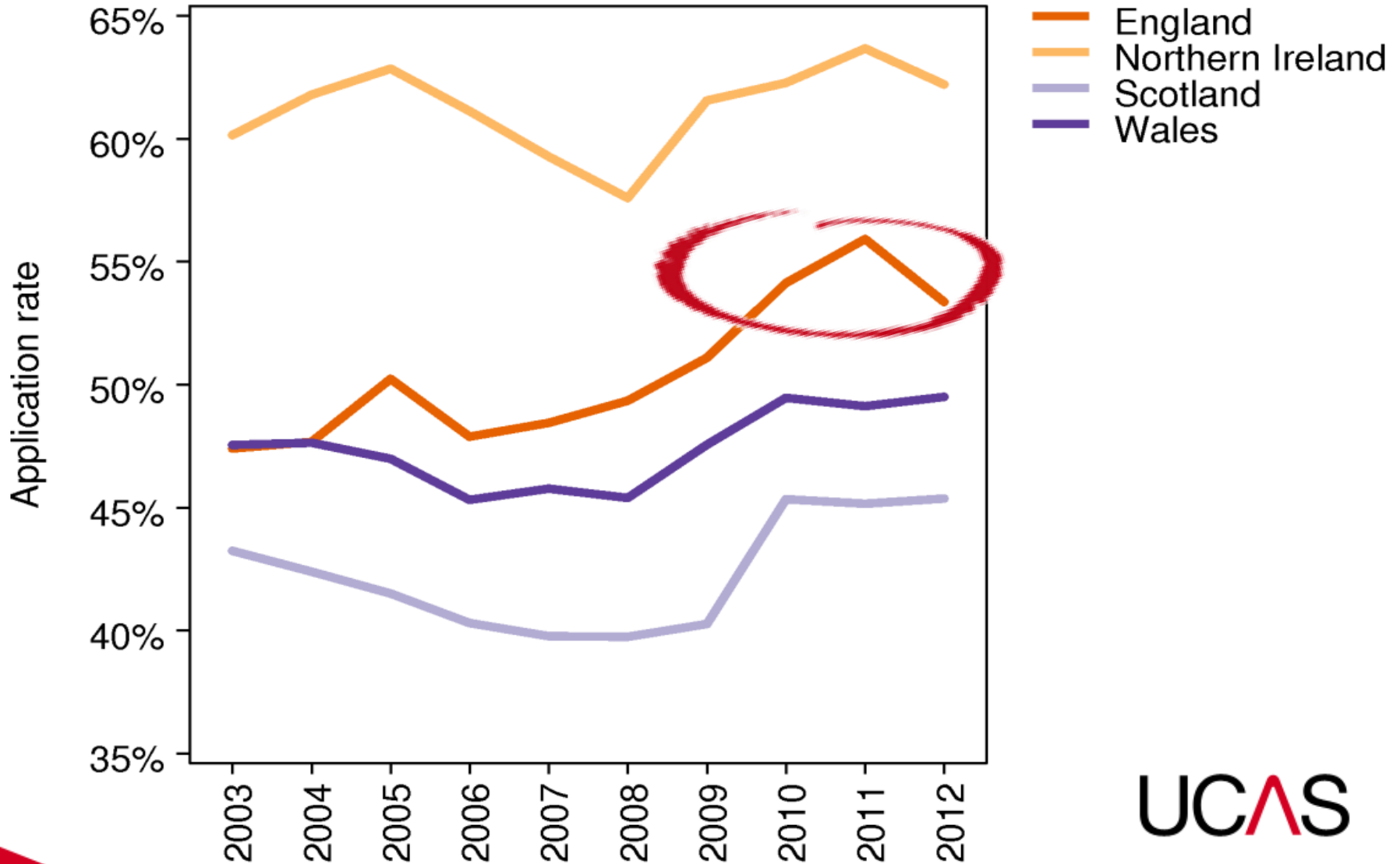
> Application rates for 18 year olds by country: Jan deadline









➤ Application rates for 18 year olds in most disadvantaged areas: Jan deadline



> Application rates for 18 year olds in most advantaged areas: Jan deadline



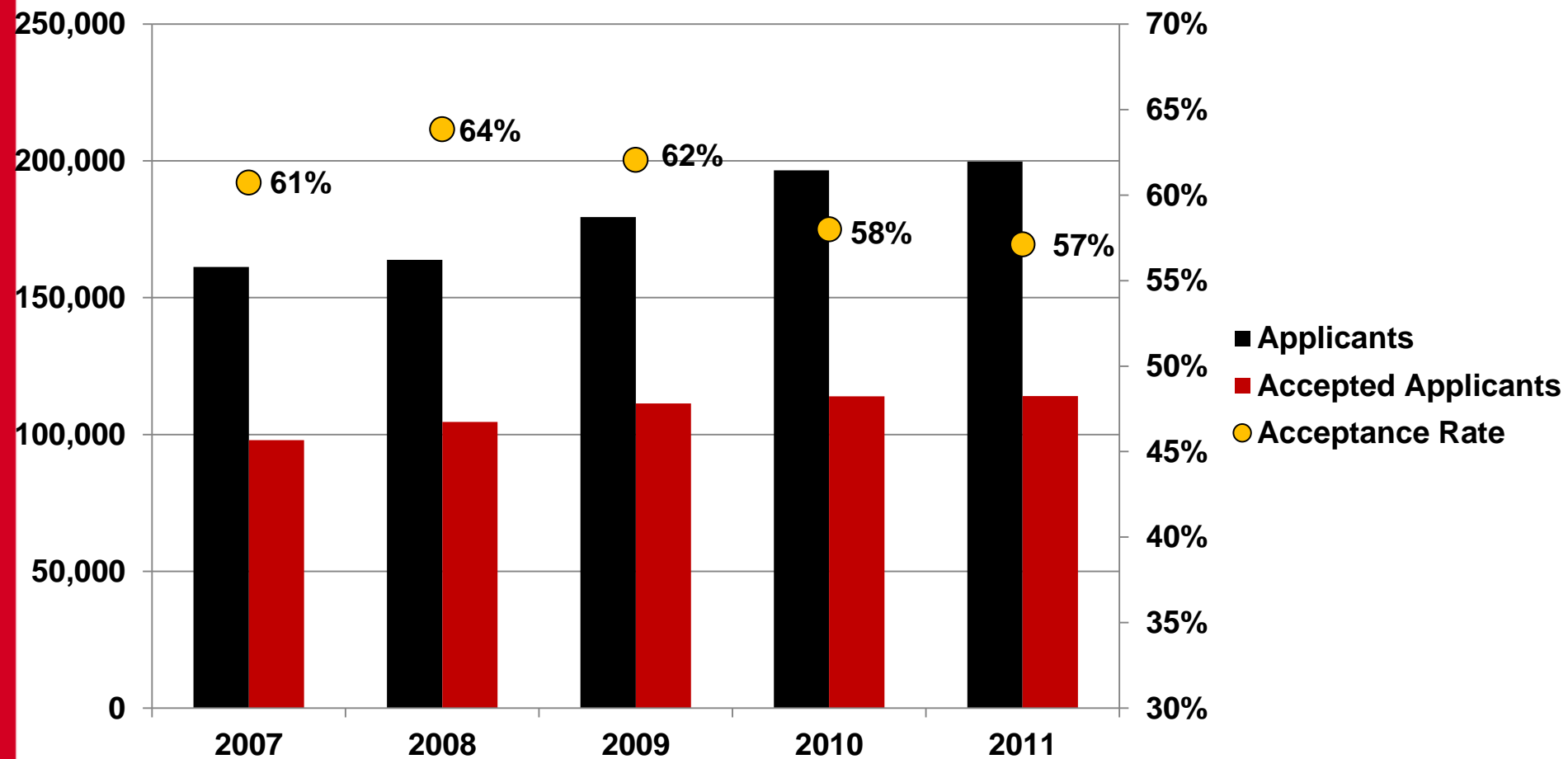
> Position at 21 May 2012 - Applicants

>	2011	2012	% change	
Total Applicants	647,008	597,473	-7.7%	
UK 19 & under:	368,021	341,123	-7.3%	
<i>...as % of Total:</i>	<i>57%</i>	<i>57%</i>		
STEM Applicants*	192,504	179,455	-6.8%	
UK 19 & under:	114,781	110,939	-3.3%	
<i>...as % of STEM:</i>	<i>60%</i>	<i>62%</i>		

UCAS

*Those with at least one choice to a STEM course

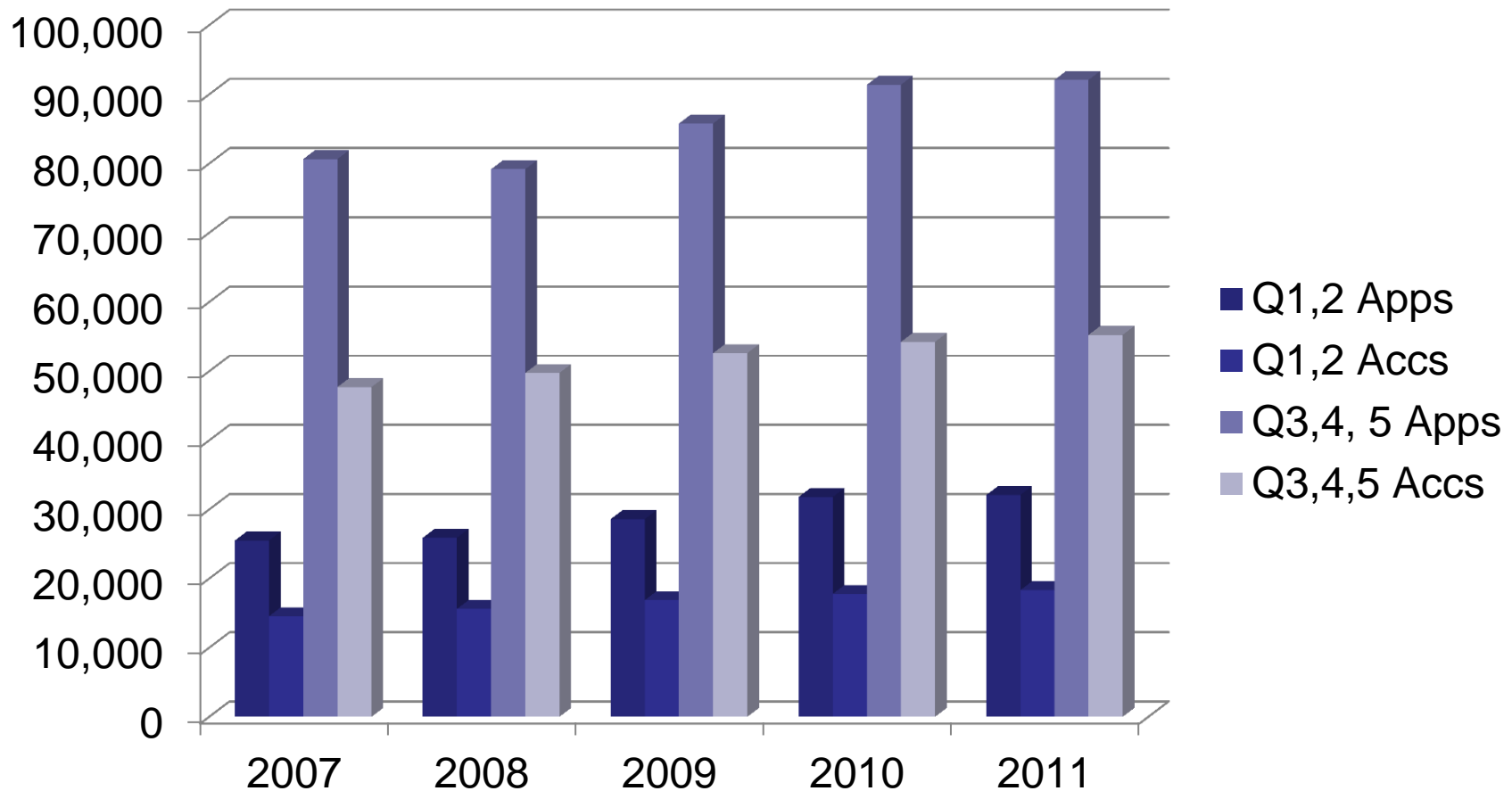
> STEM Applicants and Accepted Applicants



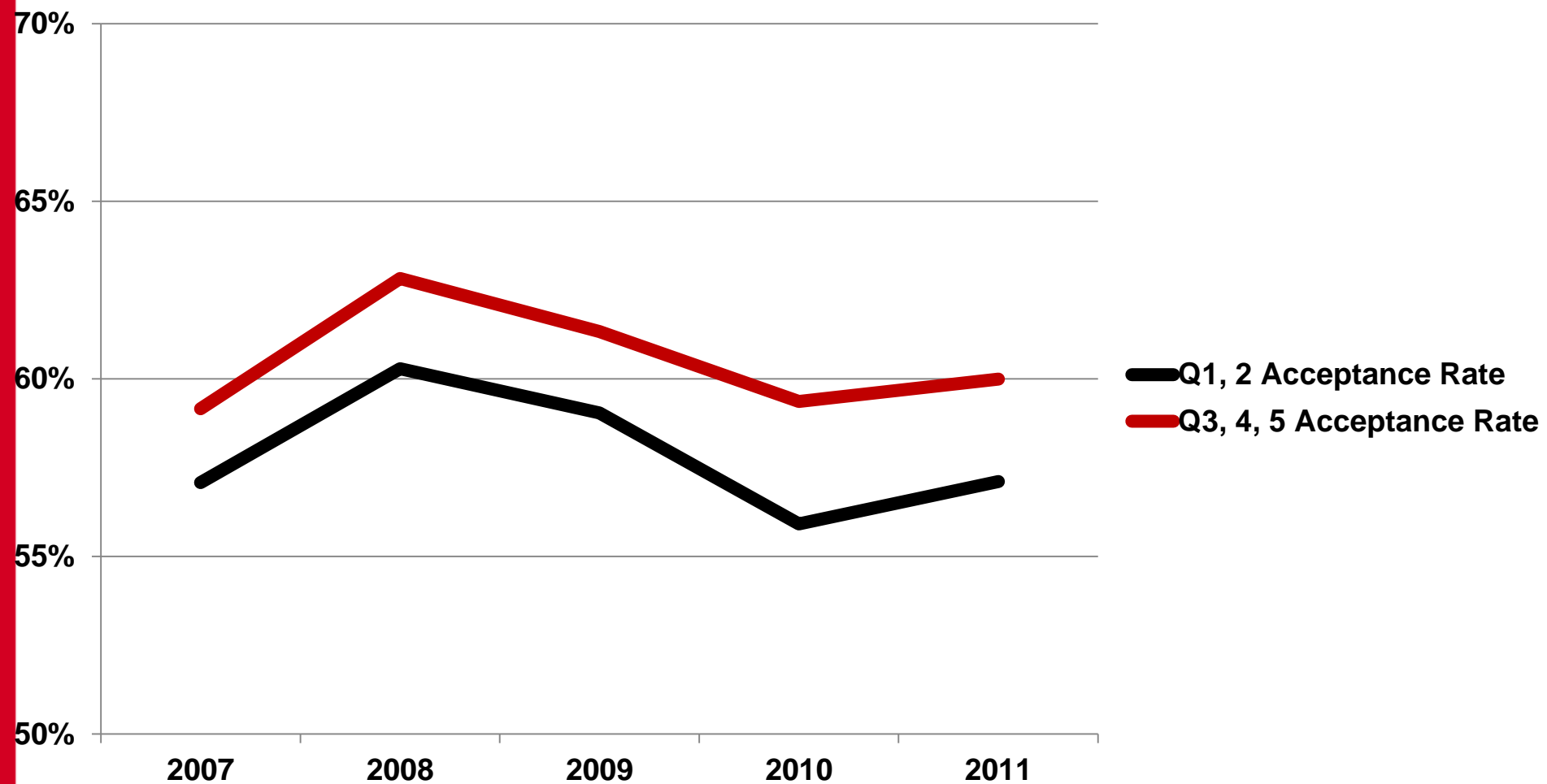
> **STEM applicants 2007-2011**

	2007		2011		Change		
	Male	Female	Male	Female	Male	Female	Total
Apps	94949	64300	125357	74374	+29%	+16%	+25%
% total	60%	40%	63%	37%	+3 ppt	-3 ppt	
Acc rate	67%	50%	62%	49%	-5 ppt	-1 ppt	

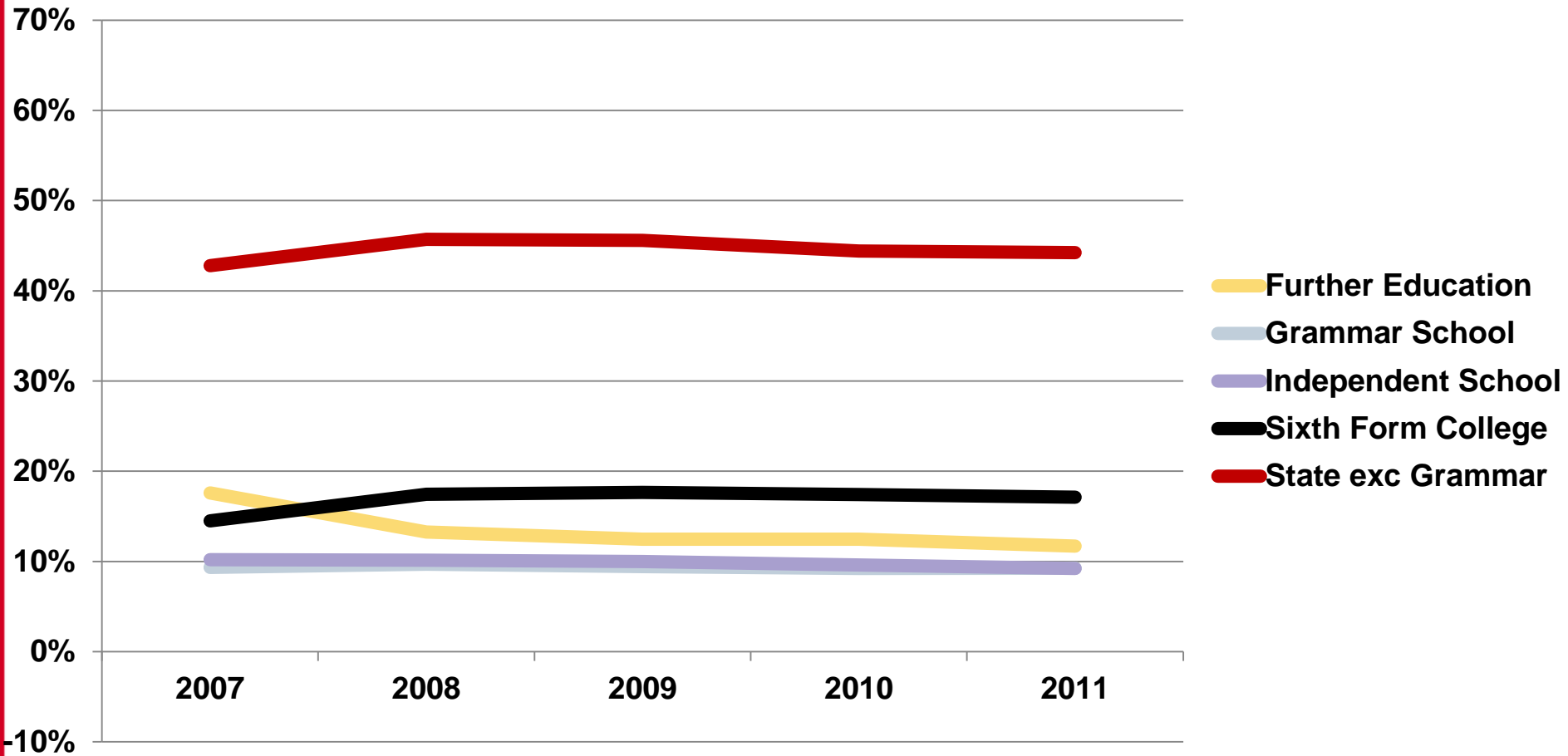
STEM Applicants and Accepted Applicants – POLAR2 quintiles



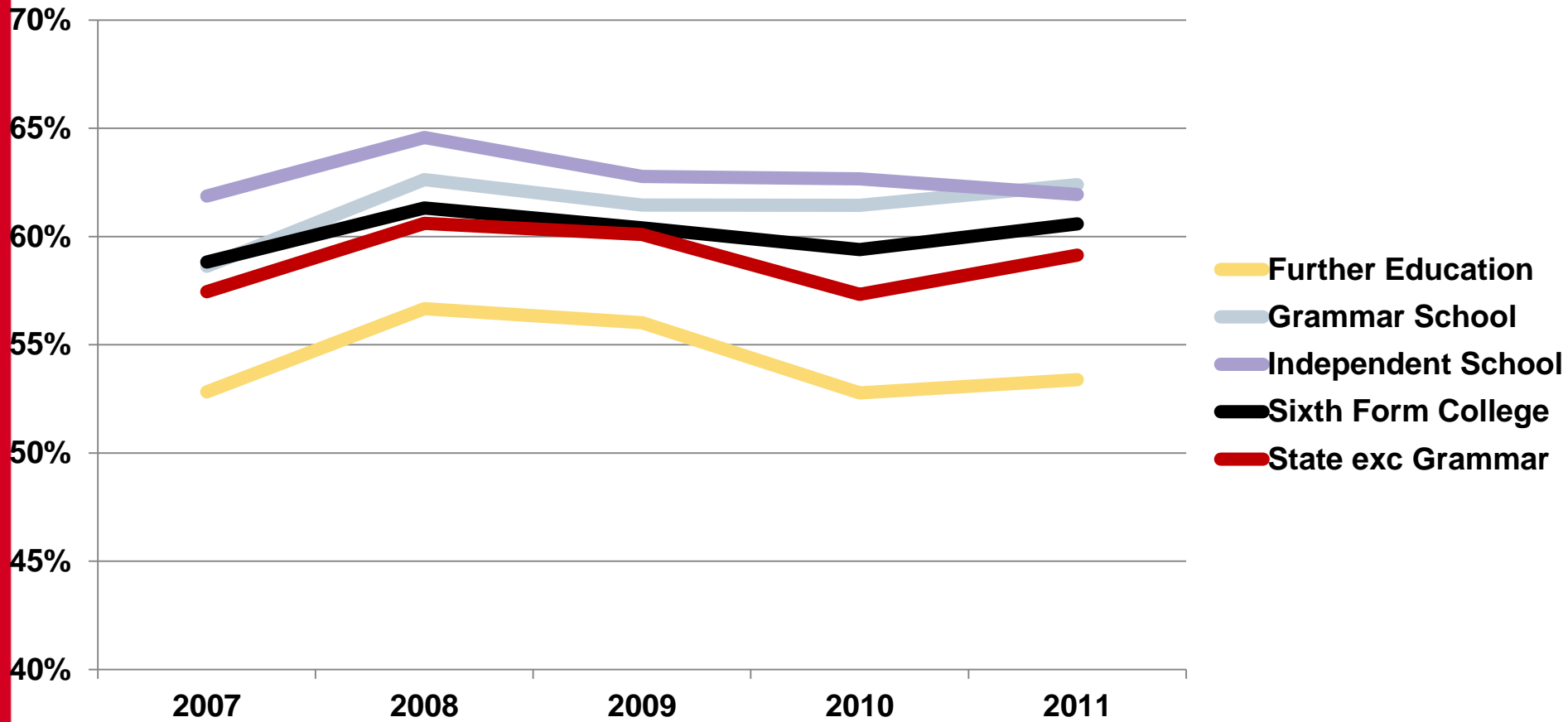
> STEM Acceptance Rate – POLAR2



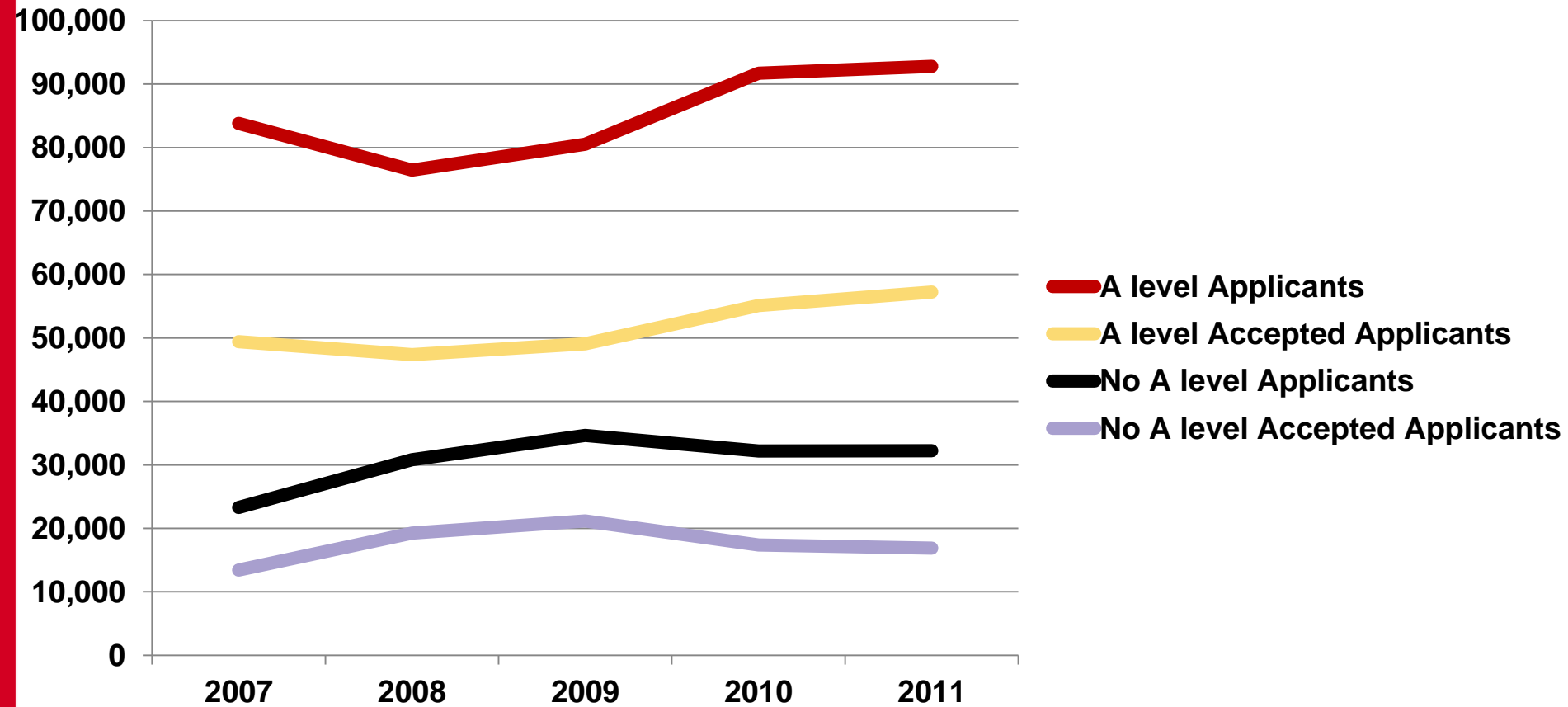
> STEM Applicants – Centre Type



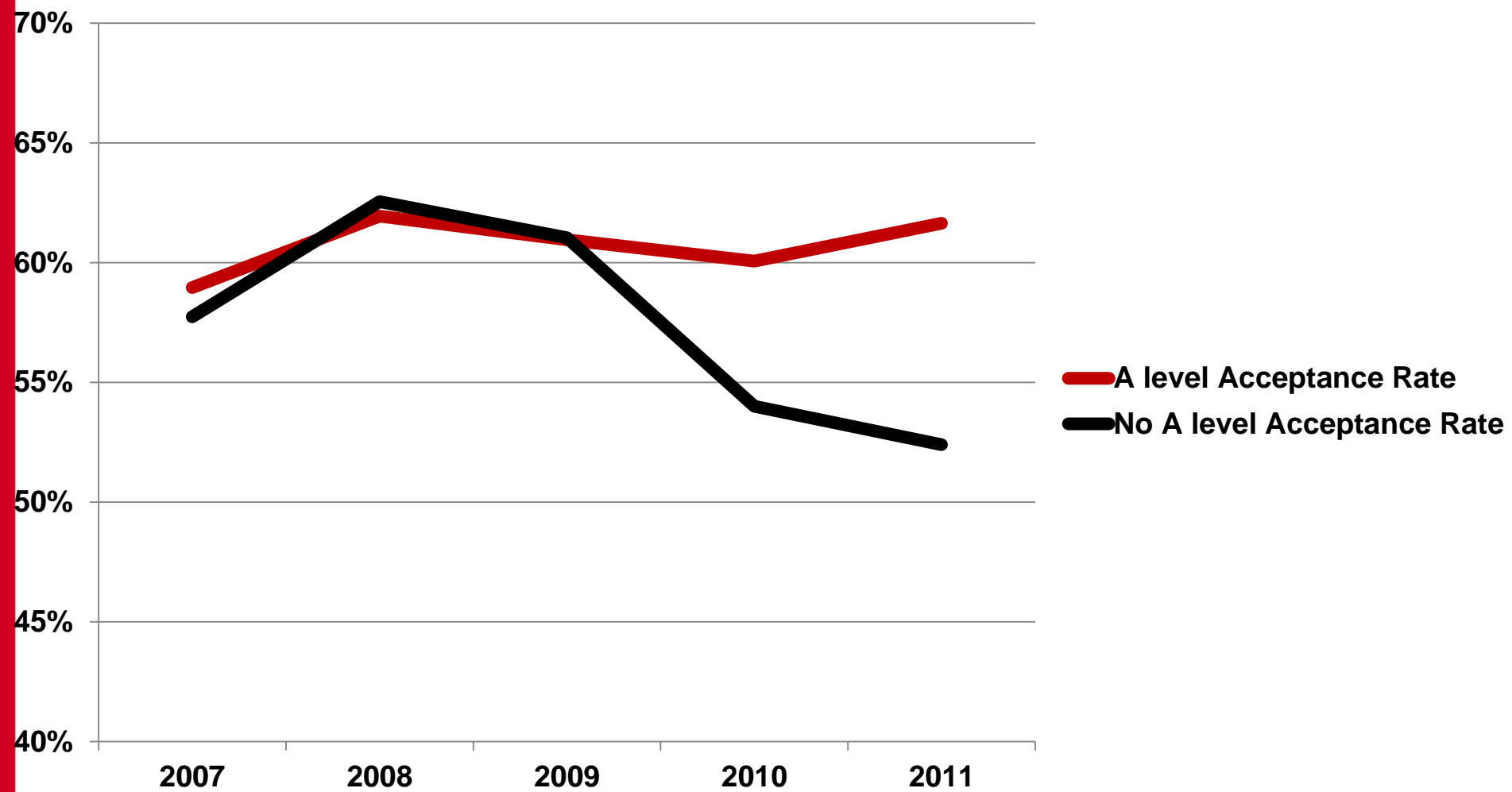
> STEM Acceptance Rate – Centre Type



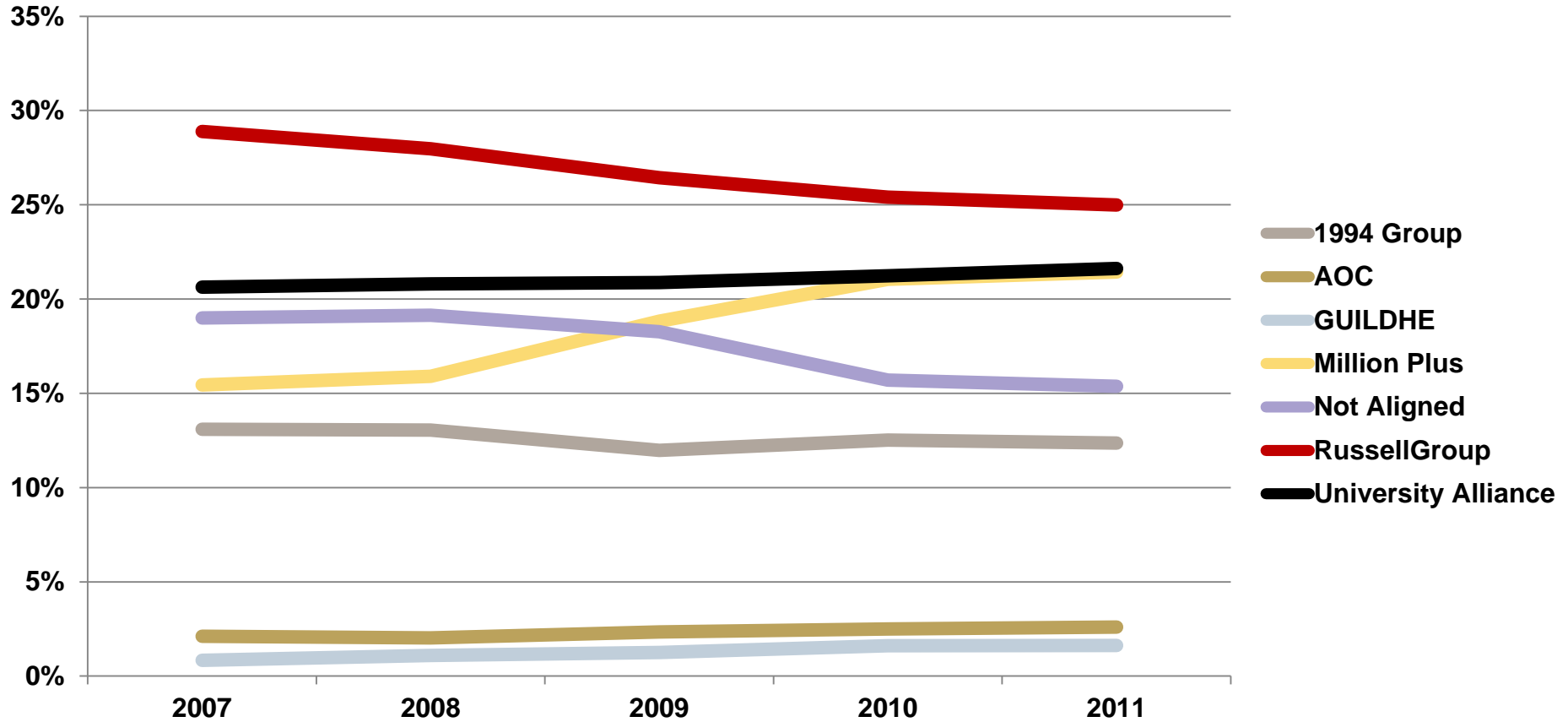
STEM Applicants and Accepted Applicants – Qualification Type



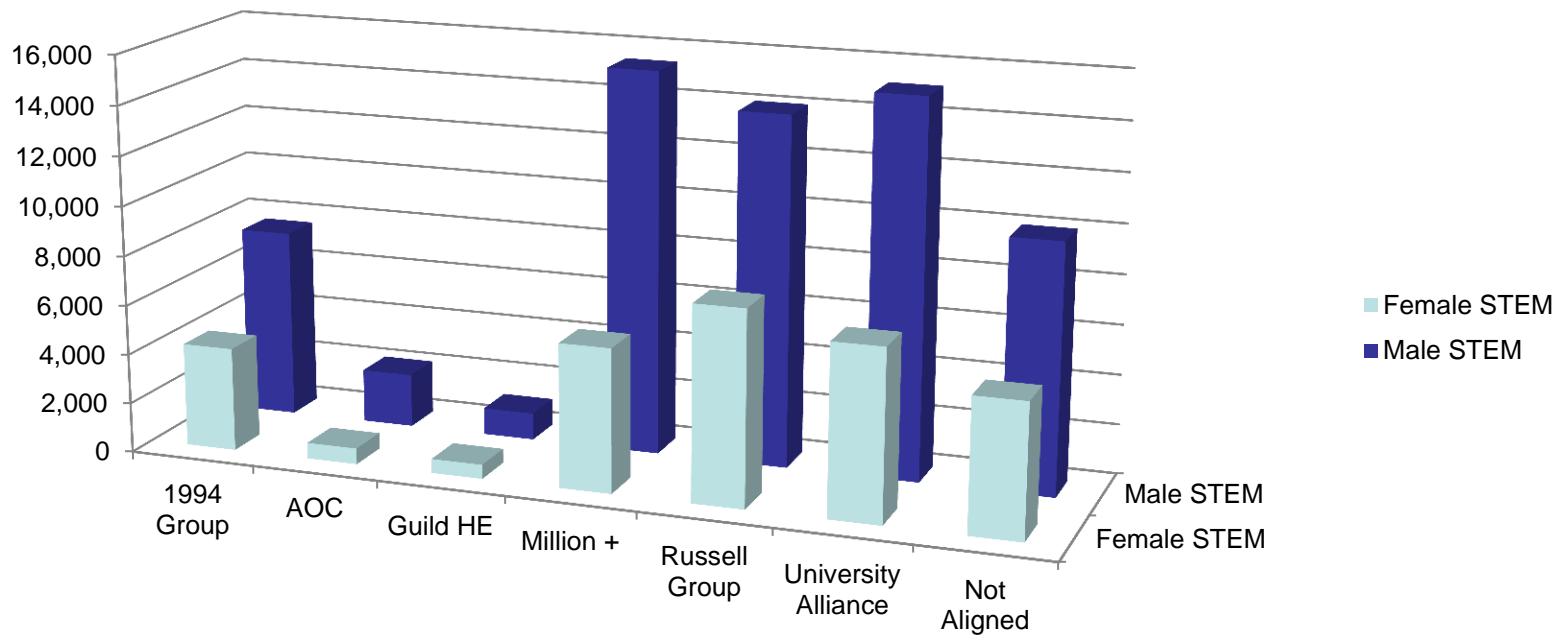
> STEM Acceptance Rate – Qualification Type



> STEM Accepted Applicants – Institution Groups



> UK domiciled 17 -19 STEM* accepts 2010

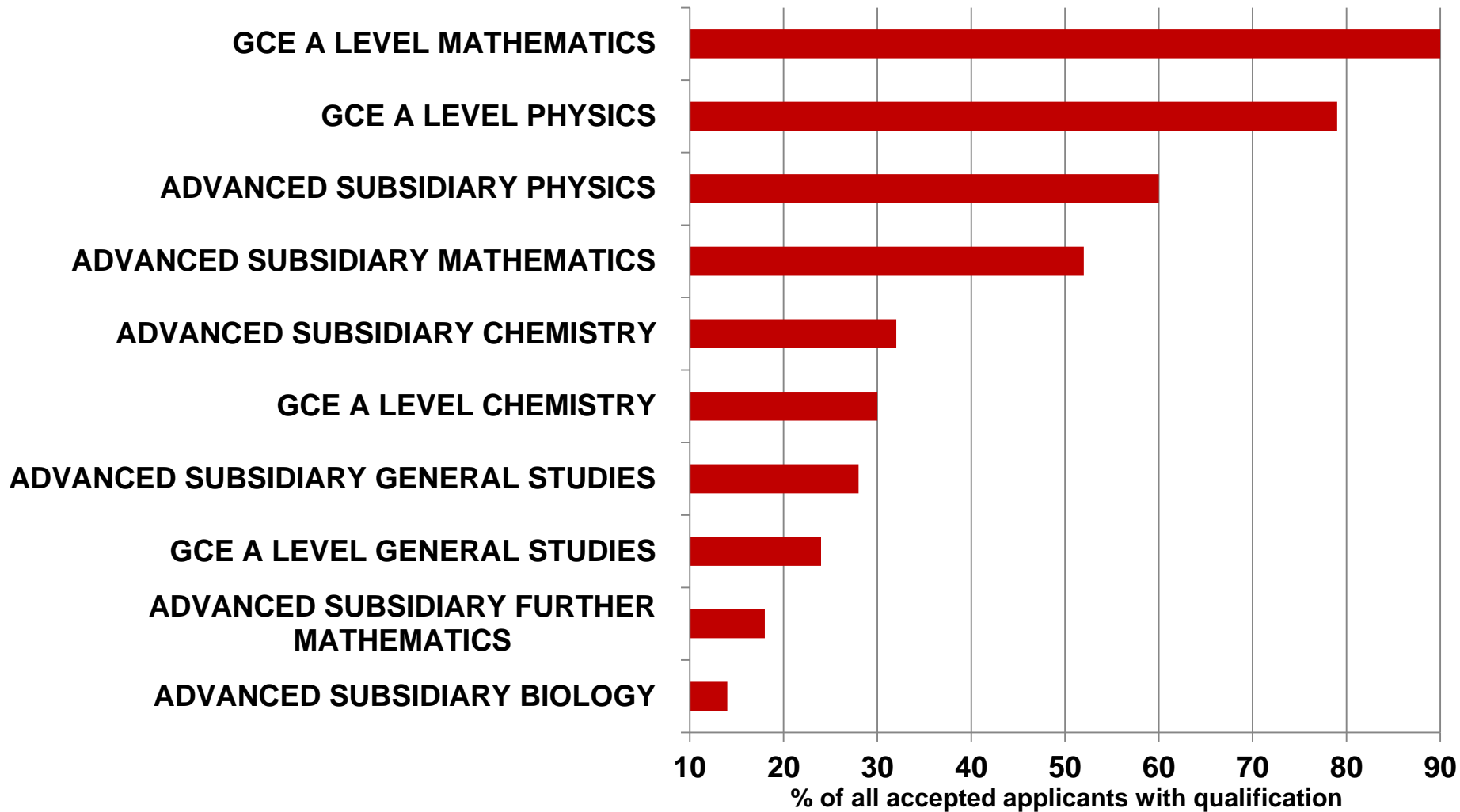


**Excludes clinical and practice based STEM*

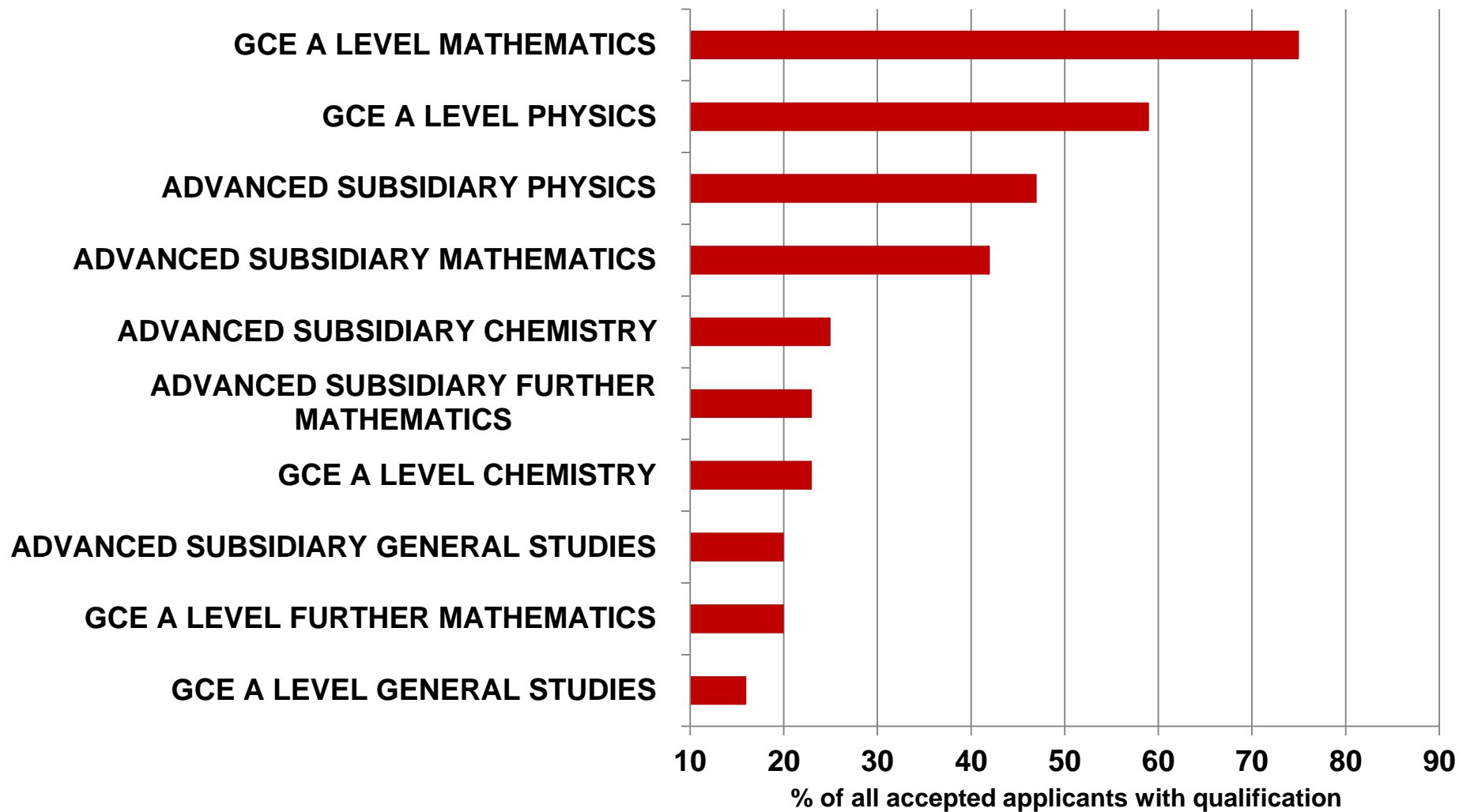
> UCAS Selected Qualifications Held (SQH) Data

- Based on UK domiciled accepted applicants 2007-2010
- Institution-subject groupings are defined as combinations of institution and subject line
- Population linked to verified qualifications results received through Awarding Body Linkage and directly for BTEC awards
- “Qualifications held” are defined as combinations of recorded qualification type and qualification subject
- To prevent disclosure of information about individuals some restrictions are applied to the SQH data
- The statistic is the proportion of accepted applicants that held the specified qualification type and qualification subject combination.

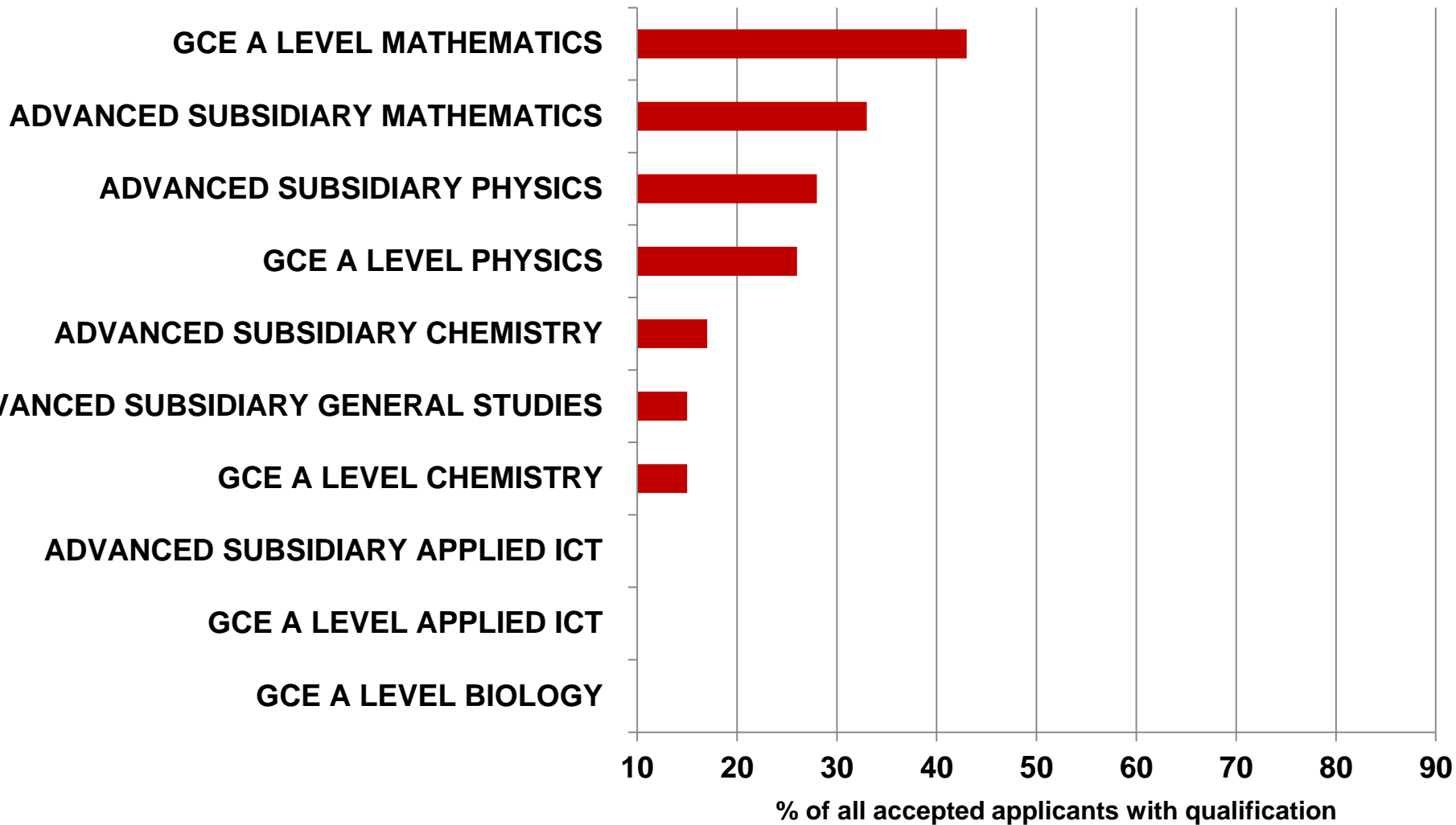
Mechanical Engineering – Russell Group Institution



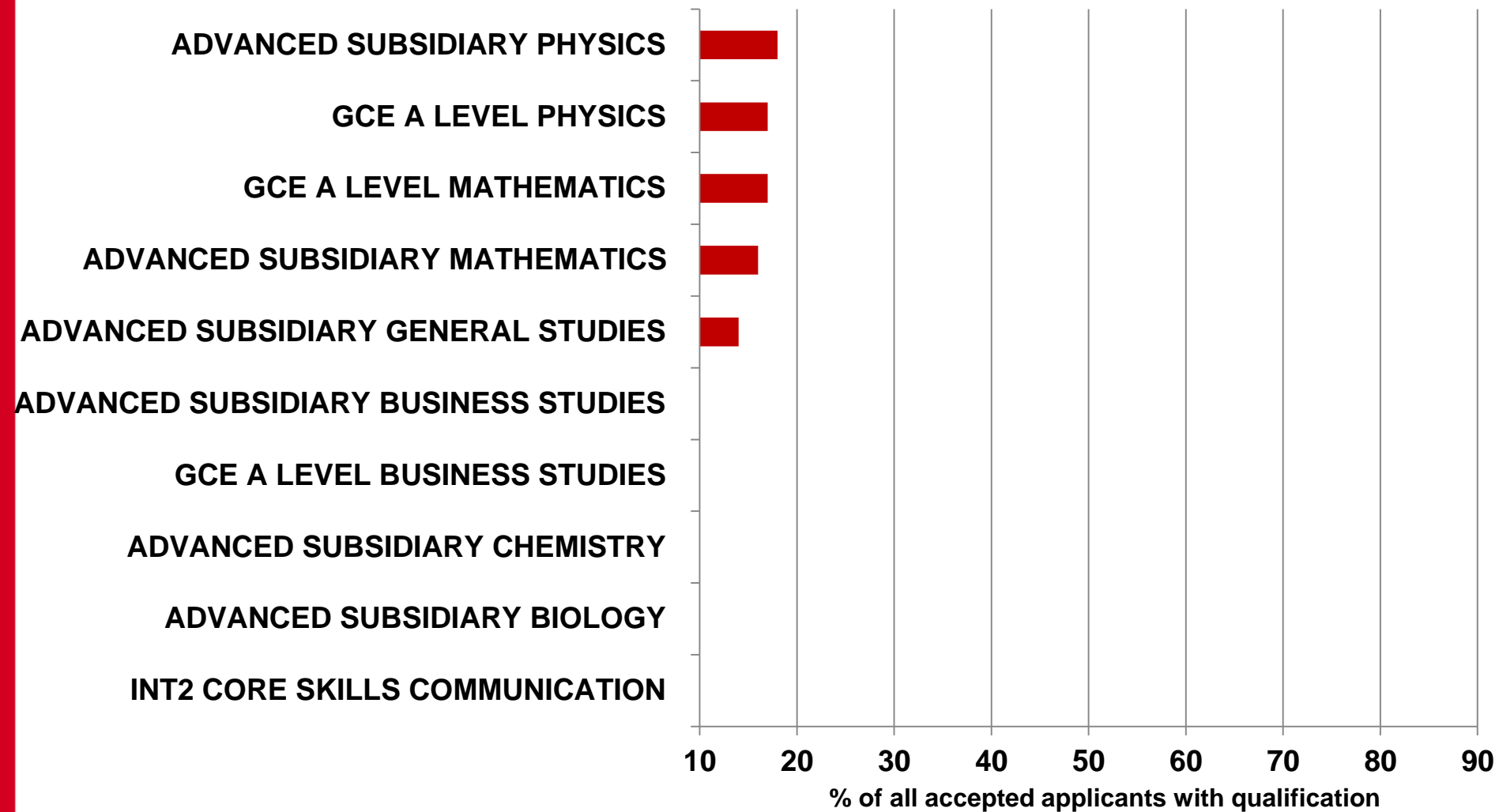
Mechanical Engineering – 1994 Group Institution



Mechanical Engineering – University Alliance Institution



> Mechanical Engineering – Million Plus Institution



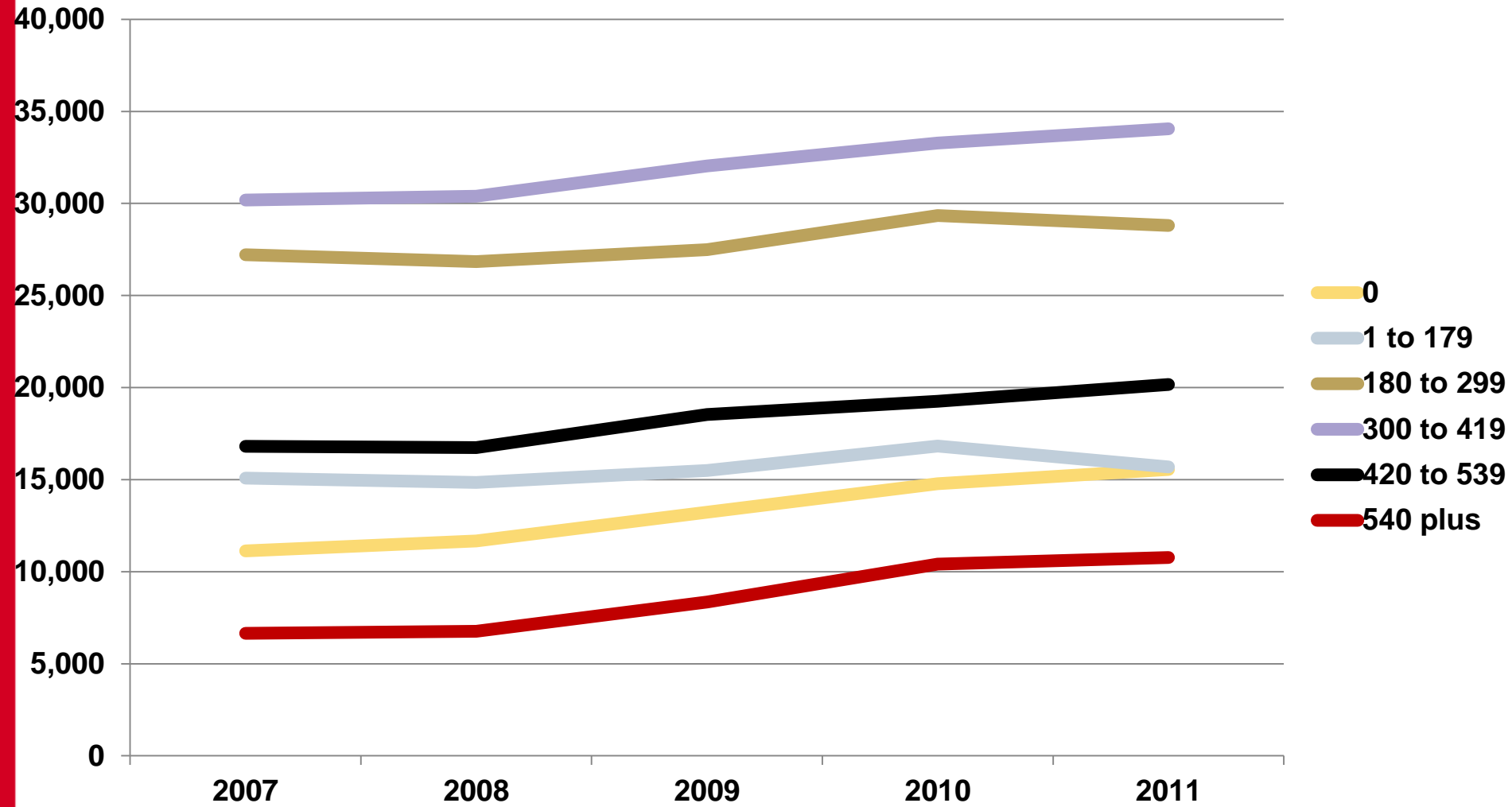
> STEM Accepted Applicants – A Level Combinations - 1

Accepted Subject Group	% Accepted Applicants	
	Maths, Further Maths, Physics	Maths, Physics, Chemistry
Group G Mathematical & Comp Sci	34.8	11.8
Group H Engineering	26.4	29.3
Group F Physical Sciences	20.0	29.0
Z General, other combined & unknown	5.1	6.0
Y Combined sciences	3.2	2.9
Group L Social Studies	3.0	1.0
Y Sciences combined with social sciences or arts	1.5	0.7
Group A Medicine & Dentistry	1.3	8.2
Group N Business & Admin studies	1.1	0.9
Group K Architecture, Build & Plan	0.7	0.5
Group B Subjects allied to Medicine	0.5	4.6
Group C Biological Sciences	0.5	2.3
Group J Technologies	0.4	0.6

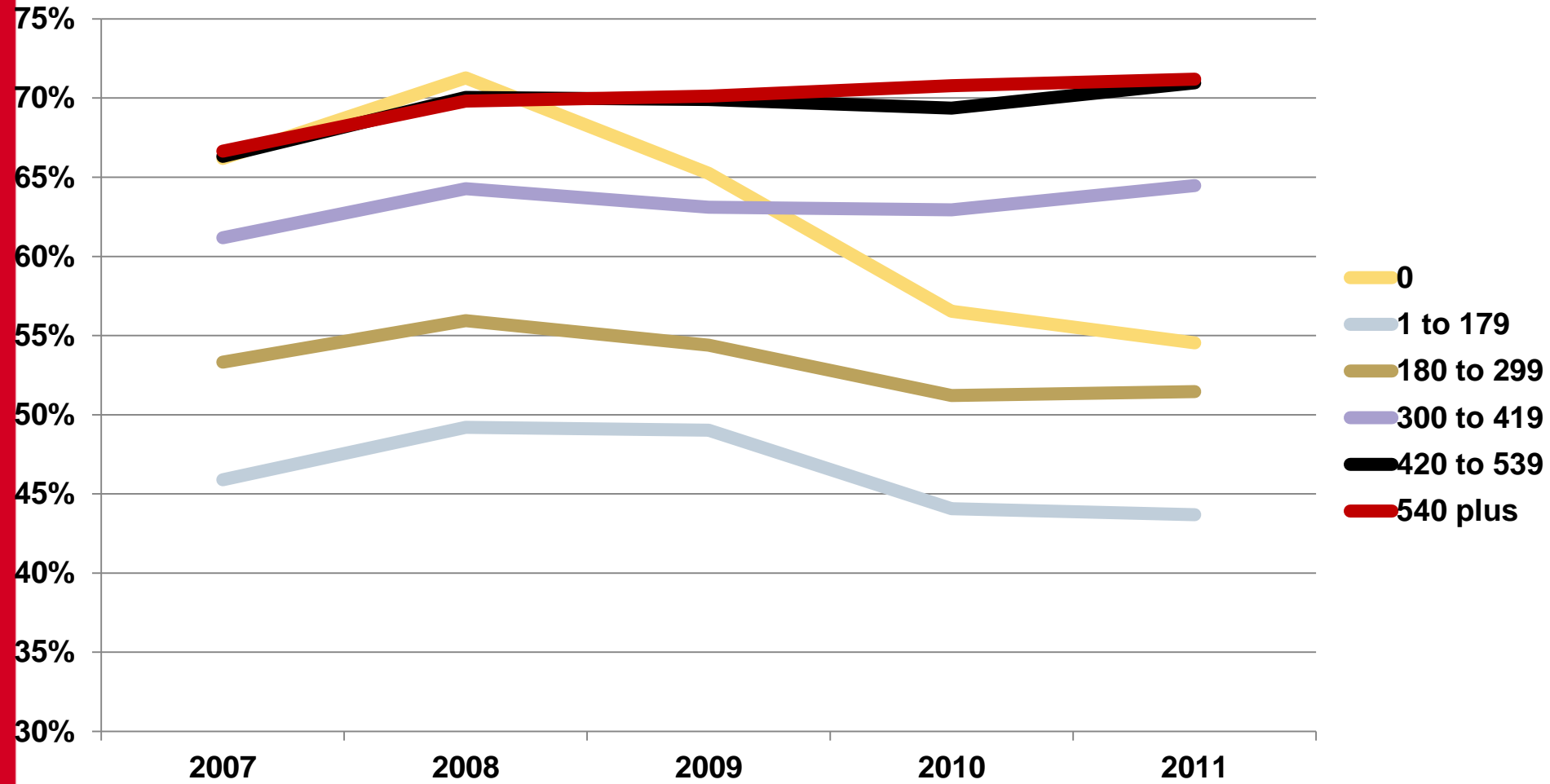
STEM Accepted Applicants – A Level Combinations - 2

A Level Subjects	Accepted Subject Group	% Accepted Applicants
Maths with Physics	Group H Engineering	33.0%
	Group F Physical Sciences	20.2%
	Group G Mathematical & Comp Sci	17.2%
	Group L Social Studies	3.5%
	Group A Medicine & Dentistry	3.3%
Maths without Physics	Group N Business & Admin studies	11.7%
	Group G Mathematical & Comp Sci	11.5%
	Group C Biological Sciences	10.7%
	Group B Subjects allied to Medicine	9.8%
	Group L Social Studies	9.4%
Physics without Maths	Group F Physical Sciences	15.1%
	Group C Biological Sciences	14.5%
	Group B Subjects allied to Medicine	10.4%
	Group H Engineering	8.2%
	Group A Medicine & Dentistry	6.5%

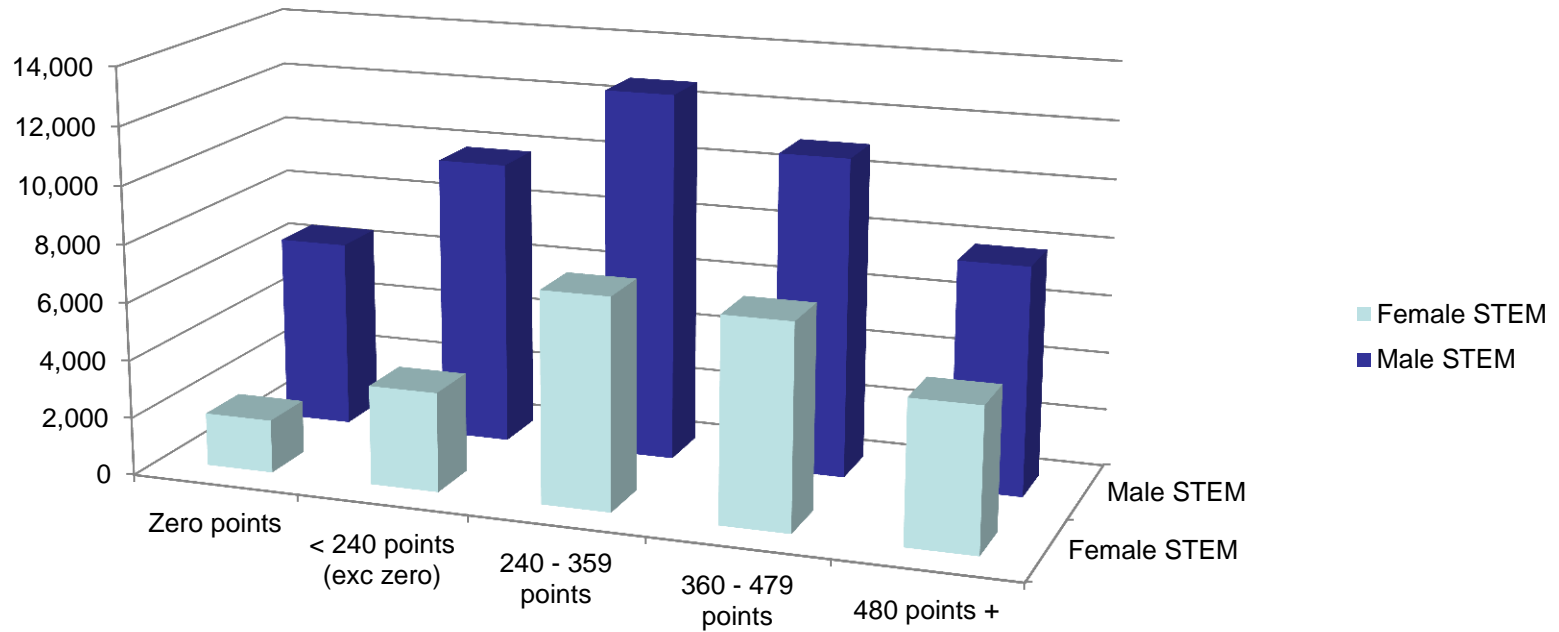
> STEM Applicants – Tariff



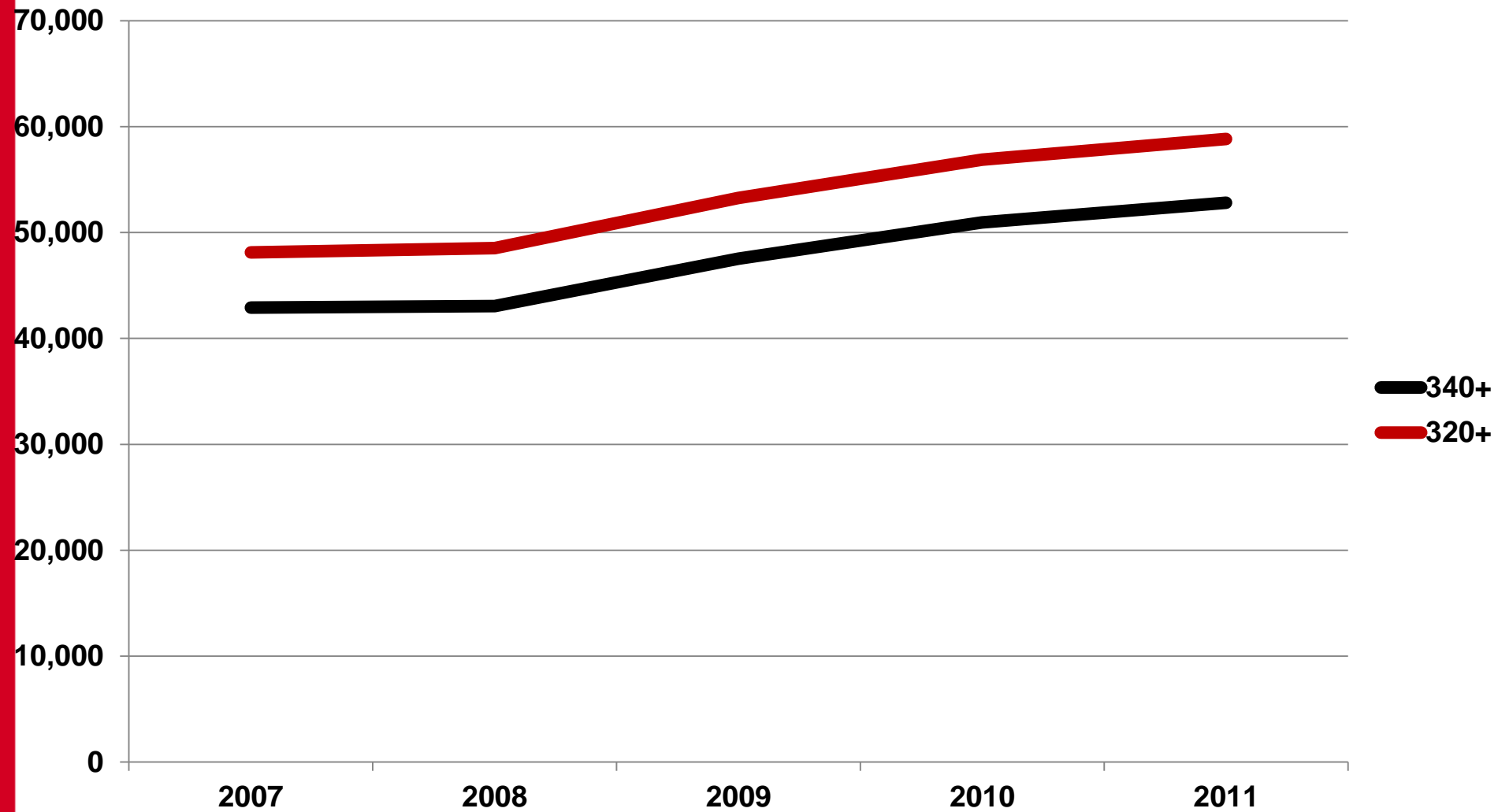
> STEM Acceptance Rate – Tariff



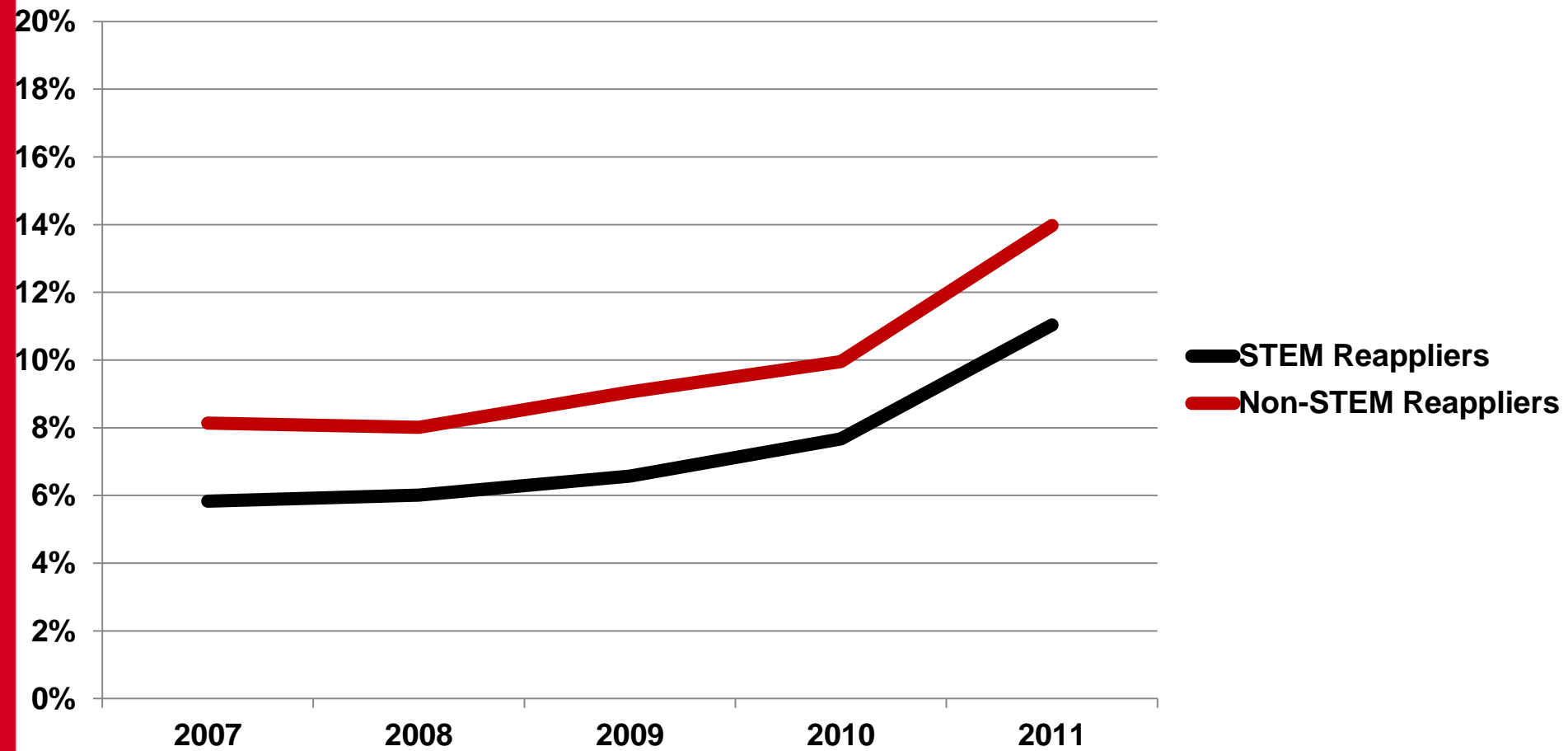
> UK domiciled 17-19 accepts by tariff



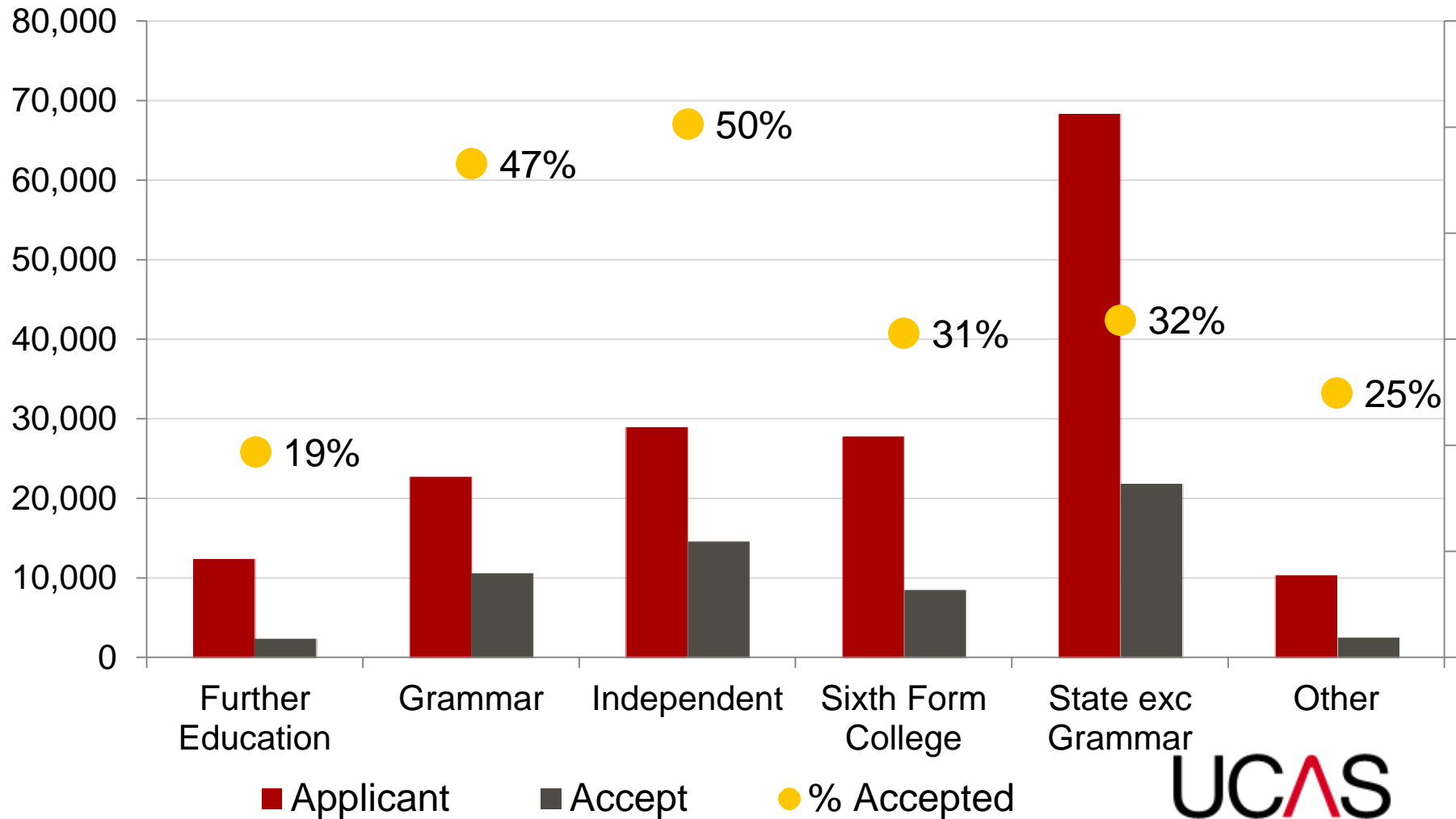
> STEM Applicants – Tariff Thresholds



> Reappliers



> 2011 end of cycle - previous education
UK-domiciled aged 17-19 applicants, accepts and
acceptance rate to Russell Group institutions.

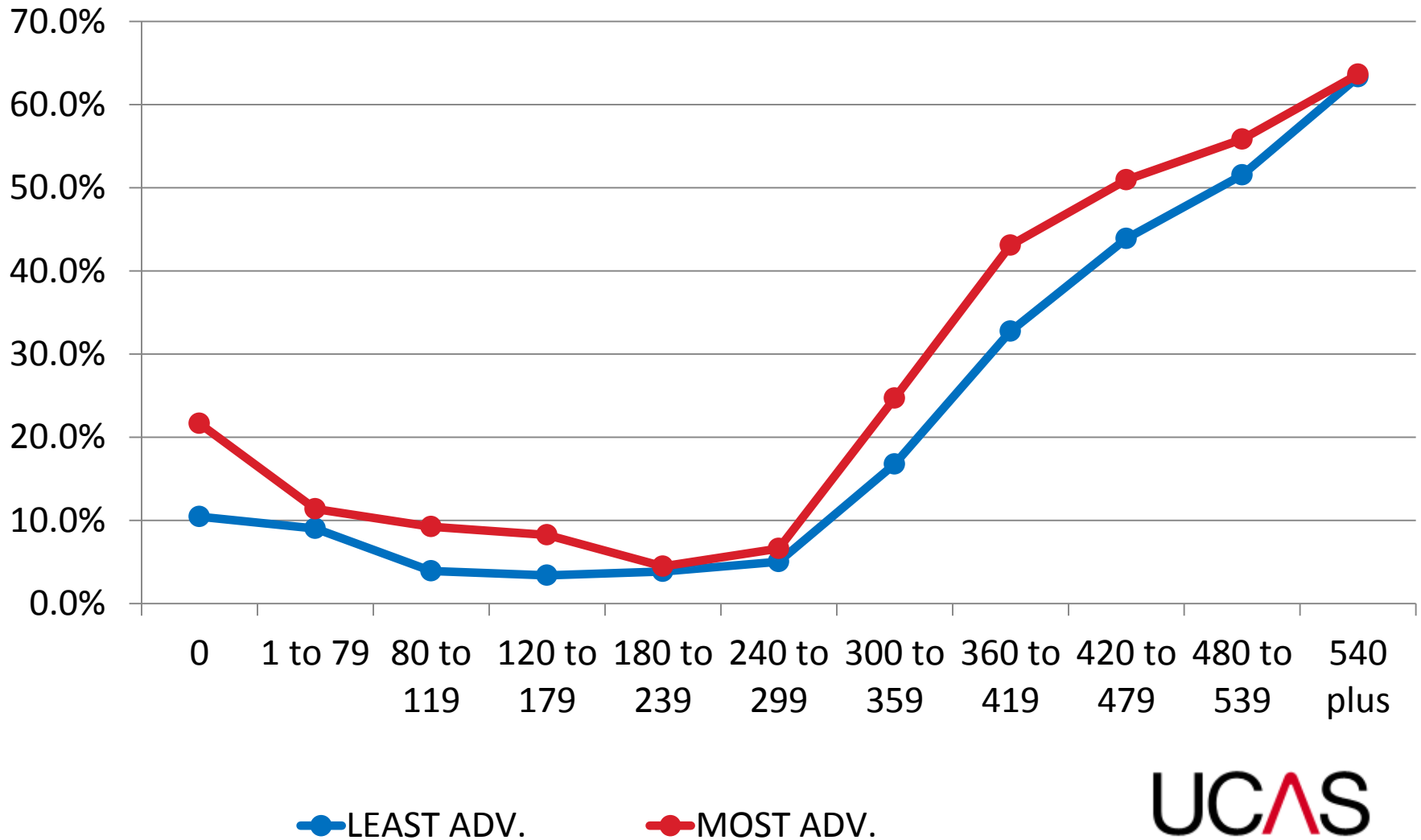


> Acceptance rates to Russell Group Institutions

	2008	2011
Least Advantaged	30%	24%
Most Advantaged	46%	41%



> 2011 end of cycle - POLAR 2 & Tariff profile
UK-domiciled aged 17-19 acceptance rates to Russell Group



> Eligibility.....

- From a household with an annual income of £25,000 or below OR in receipt of full EMA during their year 12 or year 13 studies (full EMA is currently £20, prior to 2011 full EMA was £30) OR in receipt of free school meals during their GCSE studies
- In the first generation of their immediate family to apply to higher education
- Attends, or have attended, a school which achieved less than the national average of 5 A* to C passes (including English & Maths) at GCSE
- Only option is to attend a local university
- Studies disrupted by circumstances in their personal, social or domestic lives
- Live in a geographical area with low levels of progression onto higher education
- Living or grew up in public care

> The Moral Maze.....



“I’m very glad that nobody took account of my accent, my social background, or investigated my parents’ lack of education to do me a favour – because I would never have been taken seriously. I’m all for storming the Ivory Towers but I’m not for destroying them.....”

Claire Fox, The Institute of Ideas

UCAS

> Questions



Mary Curnock Cook
Chief Executive

☎ 01242 544 996

✉ m.curnockcook@ucas.ac.uk

UCAS